



ABRITES DIAGNOSTICS FOR SUZUKI

User manual
version 1.0



Important notes

The Abrites software and hardware products are developed, designed and manufactured by Abrites Ltd. During the production process we comply to all safety and quality regulations and standards, aiming at highest production quality. The Abrites hardware and software products are designed to build a coherent ecosystem, which effectively solves a wide range of vehicle-related tasks, such as:

- Diagnostic scanning;
- Key programming;
- Module replacement,
- ECU programming;
- Configuration and coding.

All software and hardware products by Abrites Ltd. are copyrighted. Permission is granted to copy Abrites software files for your own back-up purposes only. Should you wish to copy this manual or parts of it, you are granted permission only in case it is used with Abrites products, has "Abrites Ltd." written on all copies, and is used for actions that comply to respective local law and regulations.

Warranty

You, as a purchaser of Abrites hardware products, are entitled of a two-year warranty. If the hardware product you have purchased has been properly connected, and used according to its respective instructions, it should function correctly. In case the product does not function as expected, you are able to claim warranty within the stated terms. Abrites Ltd. is entitled to require evidence of the defect or malfunction, upon which the decision to repair or substitute the product shall be made.

There are certain conditions, upon which the warranty cannot be applied. The warranty shall not apply to damages and defects caused by natural disaster, misuse, improper use, unusual use, negligence, failure to observe the instructions for use issued by Abrites, modifications of the device, repair works performed by unauthorized persons. For example, when the damage of the hardware has occurred due to incompatible electricity supply, mechanical or water damage, as well as fire, flood or thunder storm, the warranty does not apply.

Each warranty claim is inspected individually by our team and the decision is based upon thorough case consideration.

Read the full hardware warranty terms on our [website](#).

Copyright information

Copyright:

- All material herein is Copyrighted ©2005-2021 Abrites, Ltd.
- Abrites software, hardware, and firmware are also copyrighted
- Users are given permission to copy any part of this manual provided that the copy is used with Abrites products and the “Copyright © Abrites, Ltd.” statement remains on all copies
- “Abrites” as used in this manual synonymous with “Abrites, Ltd.” And all it’s affiliates
- The “Abrites” logo is a registered trademark of Abrites, Ltd.

Notices:

- The information contained in this document is subject to change without prior notice. Abrites shall not be held liable for technical/editorial errors, or omissions herein.
- Warranties for Abrites products and services are set forth in the express written warranty statements accompanying the product. Nothing herein should be construed as constituting any additional warranty.
- Abrites assumes no responsibility for any damage resulting from the use, misuse, or negligent use of the hardware or any software application.

Safety information

The Abrites products are to be used by trained and experienced users in diagnostics and reprogramming of vehicles and equipment. The user is assumed to have a good understanding of vehicle electronic systems, as well as potential hazards while working around vehicles. There are numerous safety situations that cannot be foreseen, thus we recommend that the user read and follow all safety messages in the available manual, on all equipment they use, including vehicle manuals, as well as internal shop documents and operating procedures.

Some important points:

Block all wheels of the vehicle when testing. Be cautious when working around electricity.

- Do not ignore the risk of shock from vehicle and building-level voltages.
- Do not smoke, or allow sparks/flame near any part of the vehicle fuel system or batteries.
- Always work in an adequately ventilated area, vehicle exhaust fumes should be directed towards the exit of the shop.
- Do not use this product where fuel, fuel vapours, or other combustibles could ignite.

In case any technical difficulties occur, please contact the

Abrates Support Team by email at support@abrites.com.

Table of contents

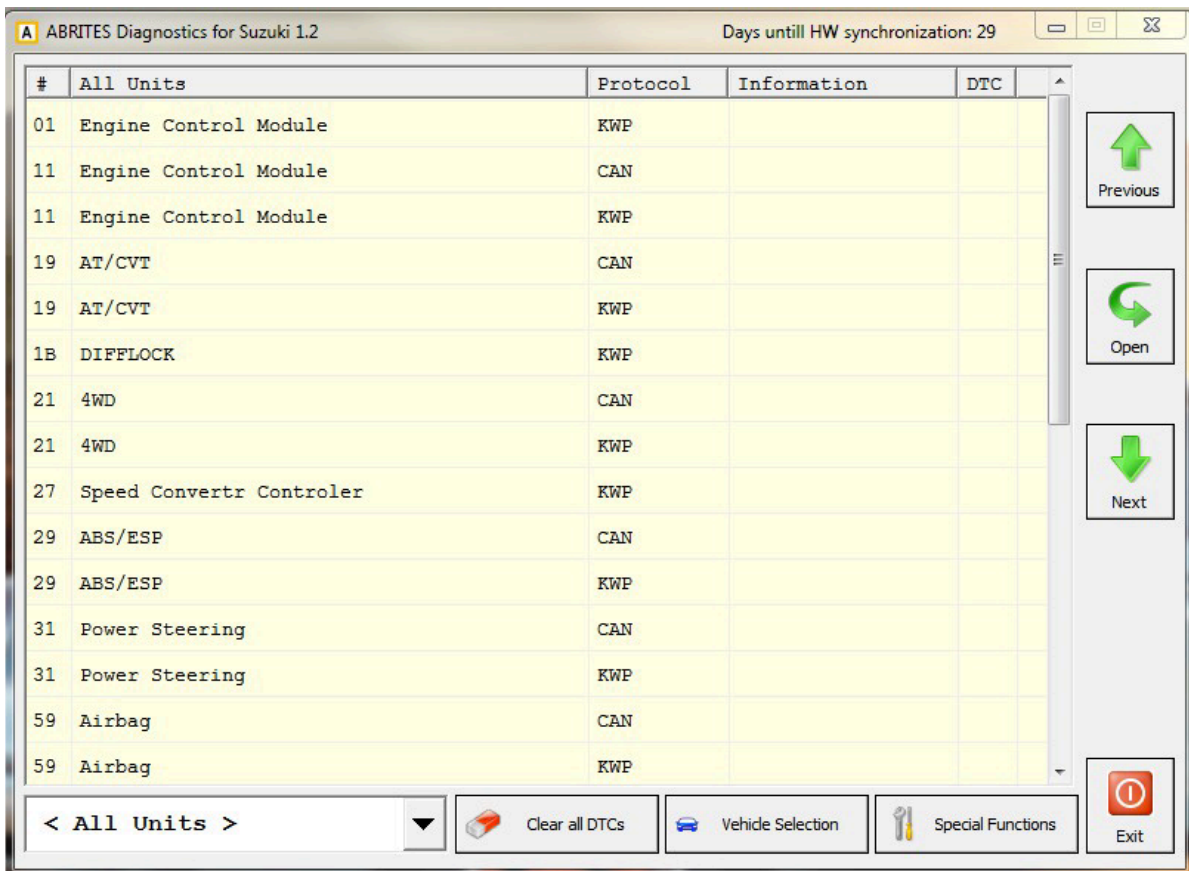
1. Introduction.....	5
2. Using the Abrites diagnostics for Suzuki	6
3. Basic Diagnostics.....	7
4. Special function key learning.....	8

1. Introduction

“Abrates Diagnostics for Suzuki” is a Windows PC based diagnostic software for Suzuki vehicles. With the help of this software you can perform complete diagnostic operations of all vehicles. For proper operation of your diagnostic software you will need a corresponding interface for connection between your PC and vehicle named “AVDI”. AVDI is an interface produced by Abrites Ltd. intended to act as an interface between the PC and the electronic control units. AVDI should be used with ABRITES software produced by Abrites Ltd. ABRITES is a trade mark of Abrites Ltd. The Abrites diagnostics for Suzuki is a competent diagnostic tool focused on professionals working in the fields of diagnostics, key learning, advanced diagnostics, module adaptation and tuning (currently being implemented and will be available in the future versions of the software). It provides a “one tool for all needs” solution in terms of Suzuki vehicles worldwide. With the help of the Abrites diagnostics for Suzuki you will be able to perform diagnostic operations such as reading and clearing of diagnostic trouble codes (DTCs), module identification and others.

2. Using the Abrites diagnostics for Suzuki

The Abrites diagnostics for Suzuki is installed together with the rest of the Abrites diagnostic software applications as a part of the Abrites diagnostic suite provided to the user via e-mail. The user can start the software by clicking on the appropriate icon from the Abrites “Quick start” menu. Once the Suzuki icon is selected the software will start and the user will see the following screen:



This is the main screen of the software and it shows all the navigation buttons as well as the ones for vehicle selection, scanning and general diagnostic trouble code (DTC) clearing.

3. Basic Diagnostics

The Abrites diagnostics for Suzuki provides the options to perform diagnostic operations such as reading and clearing of diagnostic trouble codes, module identification, live data display and Active tests, allowing the user to thoroughly test the vehicle for faults and analyse the cause of these faults.

#	All Units	Protocol	Information	DTC
01	Engine Control Module	KWP		
11	Engine Control Module	CAN		
11	Engine Control Module	KWP		
19	AT/CVT	CAN		
19	AT/CVT	KWP		
1B	DIFFLOCK	KWP		
21	4WD	CAN		
21	4WD	KWP		
27	Speed Converter Controller	KWP		
29	ABS/ESP	CAN		
29	ABS/ESP	KWP		

Vehicle Selection | Special Functions

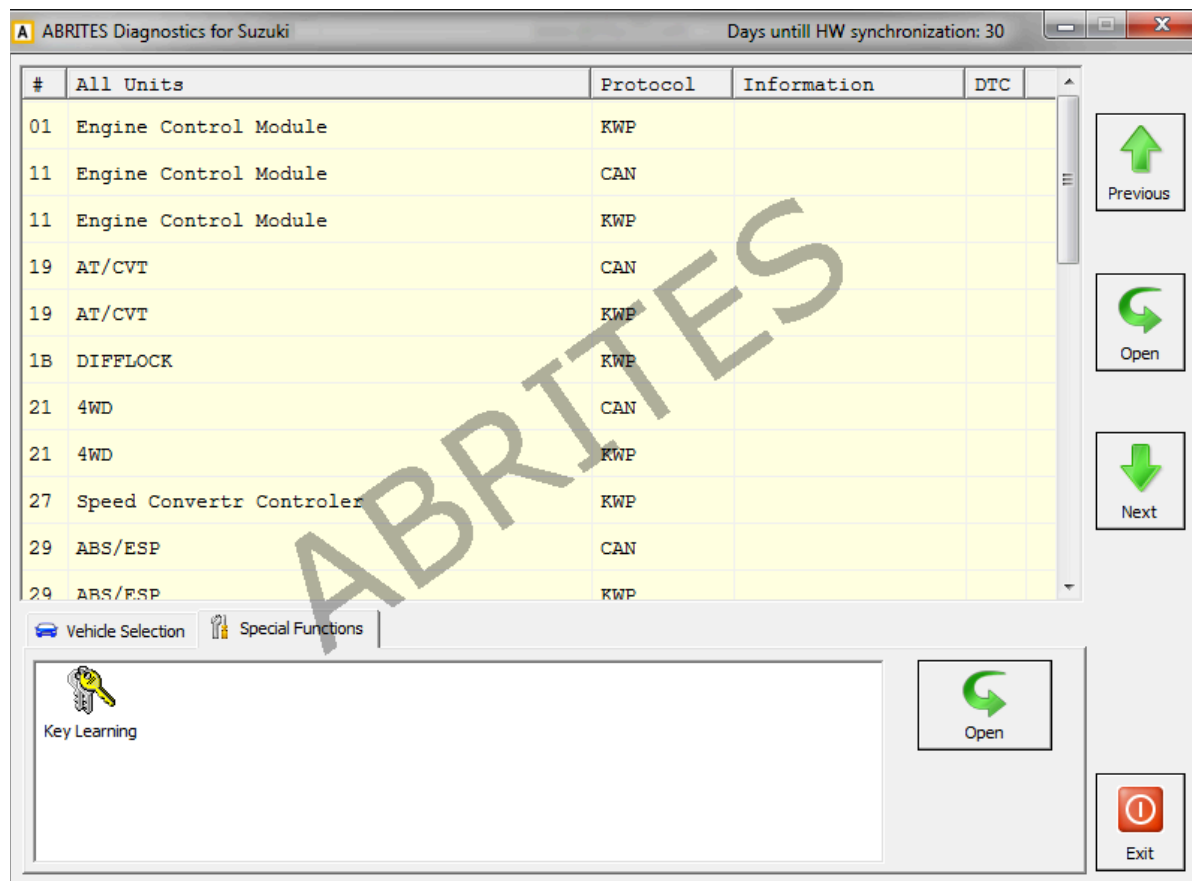
Current context: < All Units >

Scan for Units | Clear all DTCs

Previous | Open | Next | Exit

4. Special function key learning

The Key learning special function is selected by opening the special functions menu :

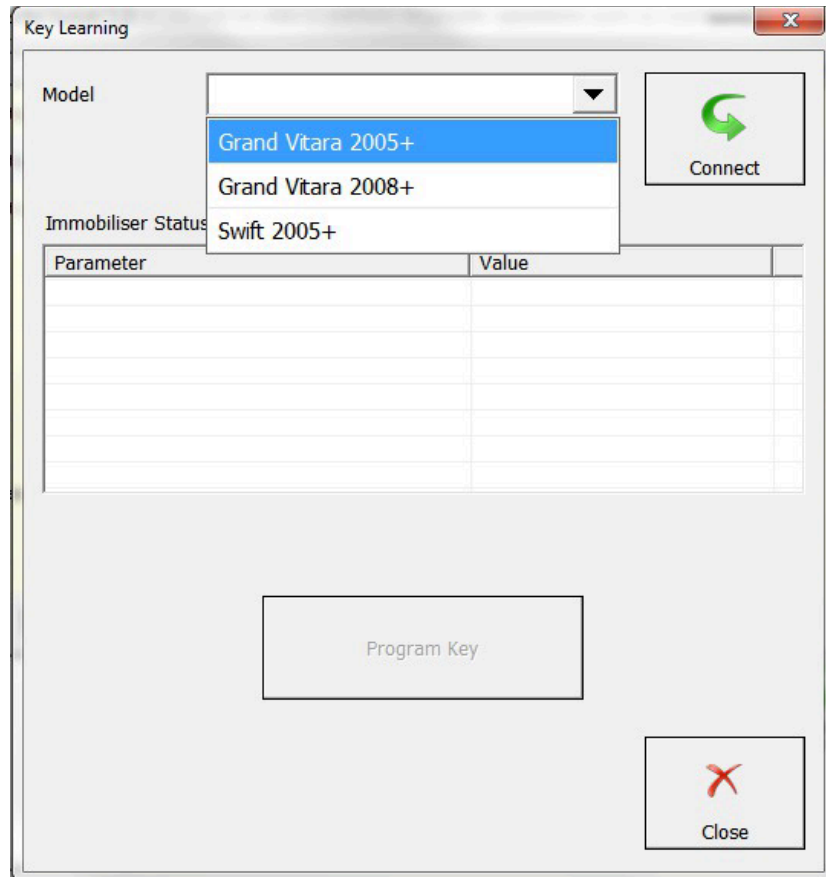


When that is done the key learning icon should be selected.



Once the function is selected the user will see the Key learning window.

From the drop down list the correct model of the vehicle must be selected:



After selecting the vehicle the user should press connect and the connection to the vehicle will be established.

From here the user should follow the on screen instructions closely and a new key can be learned.

Please refer to abrites.com in order to see the full list of supported vehicles for key learning.